



# Gibson Pewter

VOL.4 NO.1

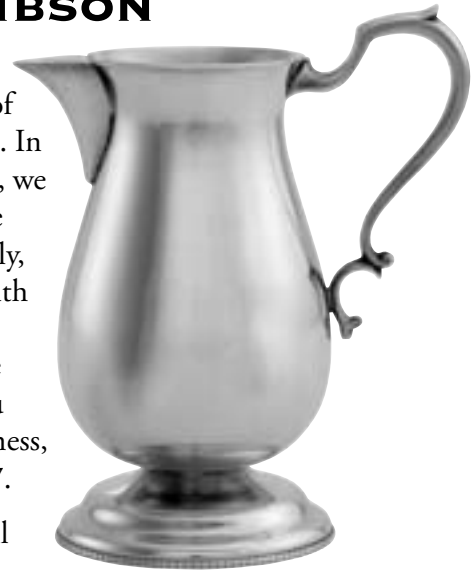
S H O P N E W S

2007



## A MESSAGE FROM JON GIBSON

Dear Friends,  
 2006 was an exciting year in the pewtershop. As most of you know, we celebrated our 40th Anniversary in 2006. In honor of this milestone and in honor of my father's life, we gave away one of his award-winning Fruit Bowls to one lucky customer in December. My oldest daughter, Emily, now 8, reached into the box and picked out the card with Anne Morrissette's name on it. There were several hundred cards in the box. *Congratulations Anne!* You've given so much pewter as gifts over the years, I hope you keep the Fruit Bowl. Amidst all of the year-end business, I managed to complete three new pieces for 2007.



The new **Creamer** which stands about 5¼" tall is an original design, but it resembles an 18th century footed Philadelphia piece with its tulip shaped body, its graceful scroll handle, and its foot with the beaded edge.

The new **Sugar Bowl** is also an original design with the same 18th century Philadelphia influence. It too stands about 5¼" tall. Many 18th century sugar bowls used tankard lids for covers and mine is no different. The beaded finial is from the drum-shaped William Will teapot. It's a wonderful thing when recycled parts work with new designs. But as you can see from these two pieces, I've painted myself right into a corner. I now have to design a Queen Anne teapot to round out the set!



The **Whitmore Pint** is my new favorite mug. Jacob Whitmore was a fine 18th century Connecticut pewterer and this piece is a tribute to him. The ball terminal handle is a beautiful thing to look at and it feels great in one's hand. Many thanks to fellow pewter enthusiast and antique pewter dealer, Wayne Hilt, for helping me to create this wonderful new handle.

I look forward to creating a piece of pewter for each of you this year. Check out some of the gift ideas on page 2 and remember, you can see all of our work at [www.gibsonpewter.com](http://www.gibsonpewter.com). Peace and good health to all.



Your pewtering friend,  
 Jon Gibson



# Great Gift Ideas



Salt & Spoon \$25



Dunham 2 Qt. Pitcher \$210



Centerpiece Vase \$45



Wood Grain Nut Bowl \$45



Small Jones Porringer \$50



Baby Cup (straight sides) \$40



Wine Coaster \$50



Fruit Bowl (MFA, Boston) \$185

**VISIT US AT [WWW.GIBSONPEWTER.COM](http://WWW.GIBSONPEWTER.COM)**